



GUARDIAN[®]

merchandiser



Product Catalog

DAIRY | DELI | PRODUCE | FRESH MEAT | BEVERAGE | FROZEN FOOD | ICE CREAM

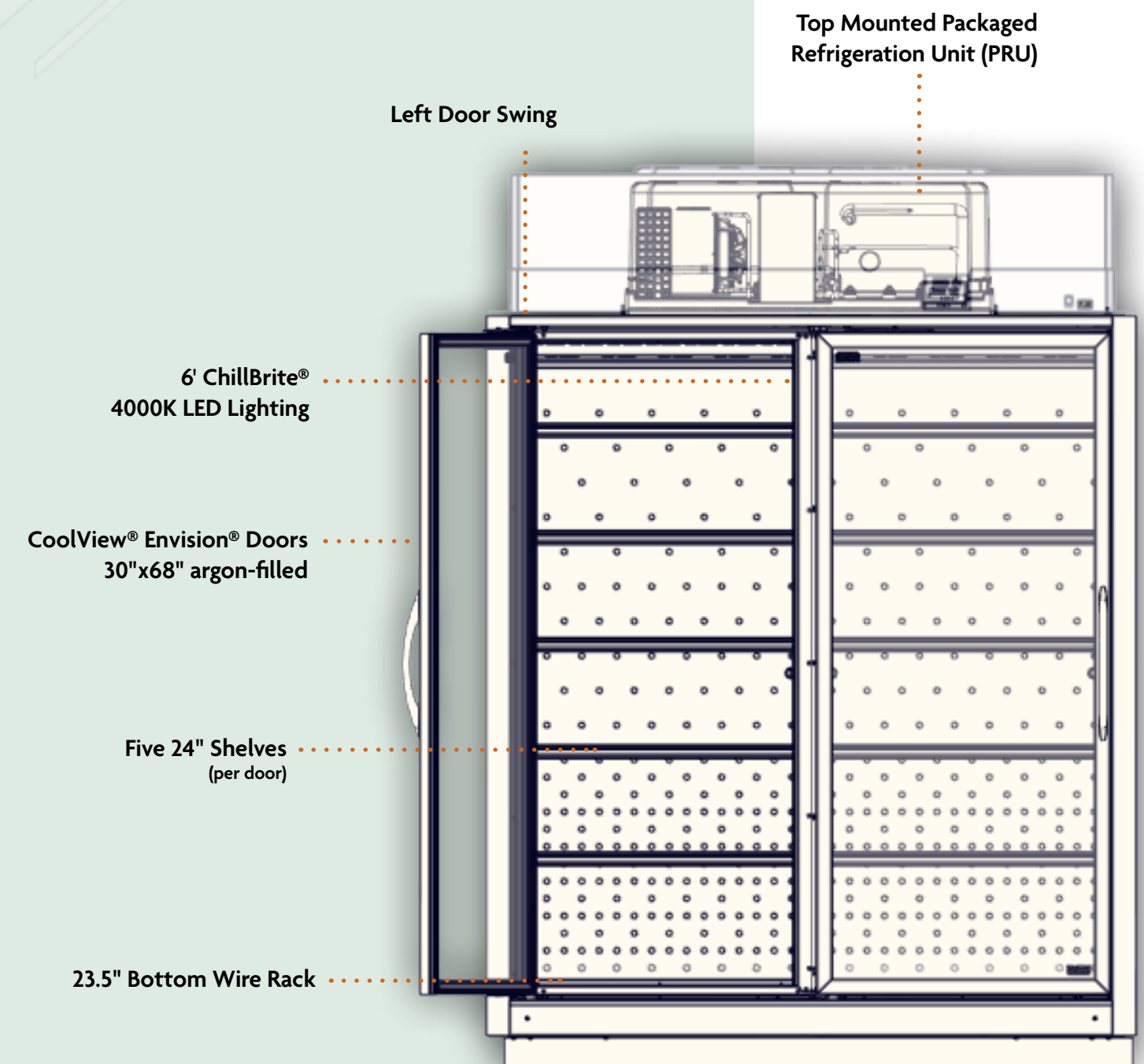
GUARDIAN[®]

merchandise

CGLC30 • CGMC30

TABLE OF CONTENTS

| | |
|------------------------|-------|
| ■ Overview | 4-5 |
| ■ Features and Options | 6-8 |
| ■ Applications | 9 |
| ■ Nomenclature | 10-11 |
| ■ Spec Sheets | 12-17 |



GUARDIAN[®]

merchandise

The Guardian[®] Merchandiser is a full sized, self-contained propane solution designed with versatility and efficiency in mind. Ideal for dollar stores and small format retail stores, the Guardian[®] delivers reliable performance in your store's footprint.

PROPANE

The Guardian[®] utilizes propane, a zero ozone depleting refrigerant that is highly efficient and a future-proof option.

SELF-CONTAINED

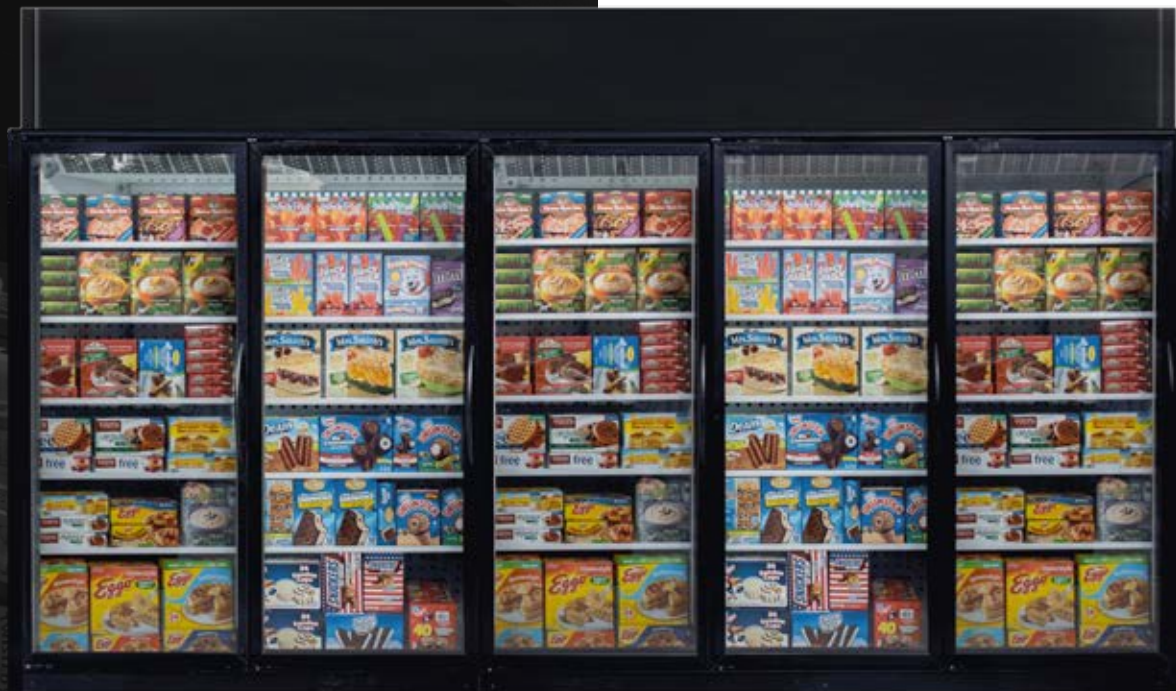
Roof-mounted packaged refrigeration unit (PRU) cools the case, so there is no need for a separate refrigeration system.

PLUG-AND-PLAY

Guide the Packaged Refrigeration Unit (PRU) into its base, bolt it down, & plug it in for quick installation & start up.

FORKLIFTABLE

Forkliftable from either side of the case, our reinforced bottom assembly features steel forklift plates, saving time from unloading the case and streamlining the installation process.



5CGLC30



3CGMC30-P

REVERSE AIRFLOW

Reverse airflow reduces frost on products and doors, ensuring clear visibility and product integrity.

DOORS

Standard CoolView[®] Envision[®] 30" x 68" doors. Designed to resist condensation and sweating.

HANDLES

CoolArc[®] Crescent[™] handles in black.

LIGHTING

ChillBrite[®] custom-designed 4000K LED lights with equal dispersion.

NATURAL SOLUTION

Genesys[®] Natural refrigerant solutions now available in R-290 (Propane).

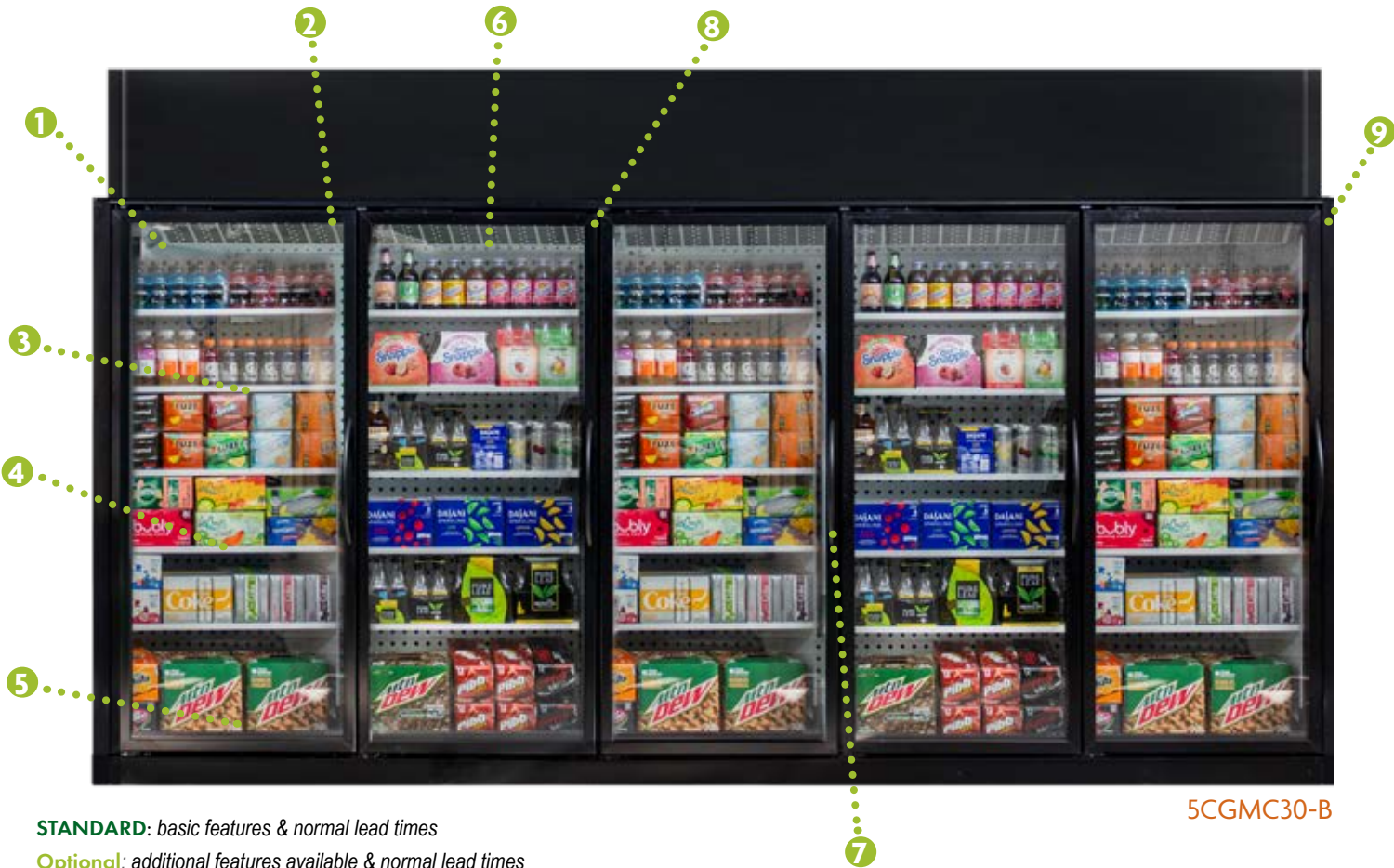
INSTALLATION FRIENDLY

Designed for effortless installation. This case fits through standard 80" doorways and moves easily from truck to store via forklift, streamlining setup.

Features and Options

Interior

| | CGLC30 | CGMC30 |
|---|----------|----------|
| 1 Interior Color | | |
| White | STANDARD | STANDARD |
| 2 Lighting | | |
| ChillBrite® 4000K | STANDARD | STANDARD |
| 3 Shelving | | |
| 30" x 24" Solid Universal, White (2-position) | STANDARD | STANDARD |
| 4 Price Tag Molding | | |
| White PVC per Shelf & Rack | STANDARD | STANDARD |
| 5 Bottom Wire Rack | | |
| 30" x 23.5" w/ 2" Lip, White | STANDARD | STANDARD |



STANDARD: basic features & normal lead times
Optional: additional features available & normal lead times
Special: custom features & increased lead time

Doors

| | CGLC30 | CGMC30 |
|------------------------|----------|----------|
| 6 Door Type | | |
| Black | STANDARD | STANDARD |
| 7 Door Handle | | |
| Classic™, Black | STANDARD | STANDARD |
| 8 Door Swing | | |
| Left Handle on Right | STANDARD | STANDARD |

Exterior

| | | |
|----------------------|----------|----------|
| 9 Exterior Color | | |
| Black ZZ-000 | STANDARD | STANDARD |
| White ZZ-100 | Optional | Optional |
| Filler-to-Wall Panel | | |
| 12" | Optional | Optional |
| 16" (Seismic) | Optional | Optional |

Controls

| | | |
|-------------------------------|----------|----------|
| Electronic Defrost Controller | | |
| Dixell XR60 | STANDARD | STANDARD |

5CGMC30-B



Other Features

Electrical

Refrigeration

| | CGLC30 | CGMC30 |
|--------------------------|----------|----------|
| Refrigeration Connection | | |
| Self-Contained | STANDARD | STANDARD |
| Defrost Type | | |
| Hot Gas | STANDARD | STANDARD |
| Refrigerant | | |
| R-290 (Propane) | STANDARD | STANDARD |
| Electrical Service | | |
| 120V - 1PH - 60HZ | | STANDARD |
| 120/208V - 1PH - 60HZ | STANDARD | |
| Also Available | | |
| Seismic Package | Optional | Optional |

STANDARD: basic features & normal lead times

Optional: additional features available & normal lead times

Special: custom features & increased lead time

GUARDIAN[®]

merchandise

CGLC30 • CGMC30

The Guardian[®] Merchandiser is a full-sized, self-contained propane solution engineered for maximum versatility and operational efficiency. Whether you're outfitting a dollar store, or any small-format retail space, the Guardian[®] adapts seamlessly to your footprint.

Perfect for end caps, remodel stand-ins, and tight merchandising zones, this unit delivers dependable performance without compromising space. Its sleek design and plug-and-play functionality make it an ideal choice for retailers.

From convenience aisles to produce sections, the Guardian[®] is your go-to merchandising solution—where reliability meets retail flexibility.



END CAPS



Perfect for promotional items, grab-and-go products, or seasonal features—this end cap solution boosts product visibility, drives impulse sales, and has a compact design for flexible store placement.

PICKUP



Keeping groceries at the right temperature and neatly sorted, our solutions are easy to install in pickup zones. This enables quick, accurate pickups with minimal wait time for customers.

RENOVATIONS



Great for temporary placement, our solutions keep your merchandise accessible and organized throughout the remodel process. With flexible, quick installation, you can seamlessly transfer cases between stores during renovations.



NOMENCLATURE

The Guardian® Merchandiser is a self-contained display case designed to support a wide range of product categories. Its flexible applications include produce, dairy, deli, beverages, ice cream, fresh meat, and frozen foods, making it a versatile solution for diverse merchandising needs. Featuring CoolView® Envision® doors, the unit offers maximum product visibility with a nearly invisible frame—drawing customer attention directly to your inventory and enhancing the overall shopping experience.

4CGM C 30-B

① ② ③ ④

① **Number of Doors**
2, 3, 4, 5

② **Type of Case**
C = Self-Contained
G = Guardian® Merchandiser
M/L – Medium or Low Temp
C – Cantilever Shelving

③ **Door Width in Inches**
30 = 30" Standard Swing

④ **Applications**
B = Beverage
D = Dairy/ Deli
M = Meat
P = Produce

THE
GUARDIAN
merchandiser



CGLC30



CGMC30

BEHIND THE SHROUD

THE PACKAGED REFRIGERATION UNIT (PRU)

- > Less than 80lbs, easy for two people to slide into place using guide rails to ensure positive lock.
- > Standard 13" Shroud shipped with every case to conceal the PRU.
- > Setting and installation of PRU
 - » No quick connects
 - » Plug 'n play (cord connected)
 - » Self-contained condensate (no field install)



Guardian® Merchandiser CGMC30 Specs

Medium Temp Reach-In Display Cases

2-Door, 3-Door, 4-Door, and 5-Door Cases

Quick Specs

Energy Usage (5-Door Daily)*

Standard: 14.5 kWh

Merchandising (4-Door)

Facings: 71.8 ft²

Packout: 143.4 ft³ with 30" wide x 24" deep shelves

Features

Go Green

Propane (R-290) is an environmentally friendly and natural refrigerant.

CoolView® Doors

30" wide x 68" tall CoolView® Envision® Doors

LED Lighting

ChillBrite® 4000K LED Lighting

Additional Models

The Guardian® Merchandiser is also available in low temp.

Continuous Lineup

Unlike traditional self-contained display cases, these grocery style merchandisers can be joined to make one continuous lineup.



Manuals and Instructions:
<https://www.zero-zone.com/cglc-cgmc>

Applications



Beverage



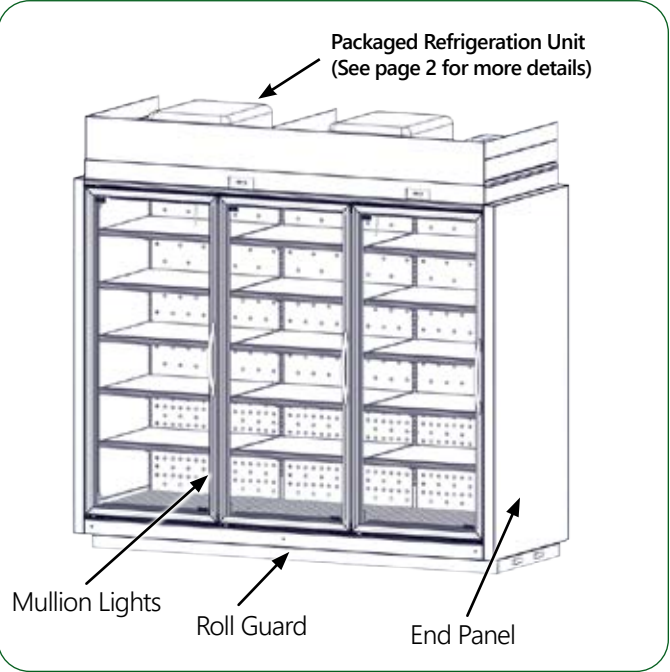
Dairy



Deli



Produce



Contact Us:

800-247-4496

www.zero-zone.com

Specifications are subject to change without notice. All dimensions are nominal.
Case designed to operate in an ambient temperature of 75°F and relative humidity of 55% or lower.



SS-136 Rev A • 11/19/2025
© 2025 Zero Zone, Inc.
Page 1 of 3



Guardian® Merchandiser CGMC30 Specs

CGMC30 Self-Contained

Standard Package

| Refrigeration Data |
|--|
| Number of PRUs |
| Refrigerant Charge (g) ¹ |
| Zero Zone PRU Unit # |
| Total Weight of PRU(s) (lbs.) ² |
| Electrical & Energy Data ^{3,4} |
| Daily Energy Use (kWh) |
| Amps (a) |
| Voltage/Phase/Frequency |
| NEMA Configuration |
| Rejected Heat (Btu/h) ⁵ |

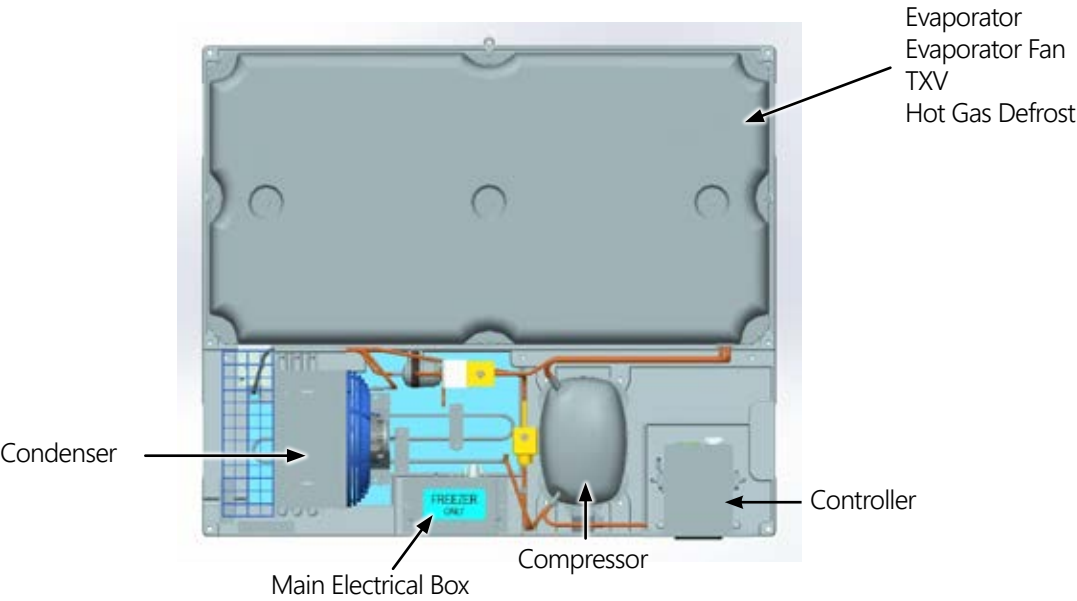
| R-290 Refrigerant | | | |
|-------------------|---------------|---------------|--------------|
| 2-Door | 3-Door | 4-Door | 5-Door |
| 1 | 2 | 2 | 3 |
| 120 | 240 | 240 | 360 |
| 69-0875-02 | 69-0875-02 | 69-0875-02 | 69-0875-02 |
| 70 | 140 | 140 | 210 |
| 2-Door | 3-Door | 4-Door | 5-Door |
| 5.6 | 8.2 | 9 | 14.5 |
| 3.9 | 6.9 | 6.9 | 9.9 |
| 120V-1PH-60Hz | 120V-1PH-60Hz | 120V-1PH-60Hz | 120-1PH-60Hz |
| L5-20P | L5-20P | L5-20P | L5-20P |
| 800 | 1160 | 1275 | 2060 |

Physical Data

| Case Calculations |
|---|
| Facings (ft. ²) |
| Packout (ft. ³) 24" Shelves |
| Weight (lbs.) ⁶ |

| 2-Door | 3-Door | 4-Door | 5-Door |
|--------|--------|--------|--------|
| 28.7 | 42.5 | 57.3 | 71.8 |
| 57.3 | 86 | 114.7 | 143.4 |
| 630 | 900 | 1,160 | 1,510 |

CGLC30 Packaged Refrigeration Unit (PRU) Top View



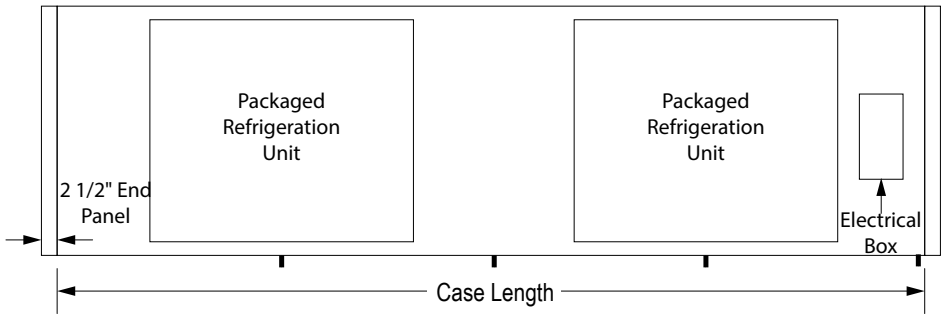
- Notes:
1. Refrigerant charge includes combined Packaged Refrigeration Unit.
 2. Two people are required to safely lift a single PRU.
 3. Data based on Zero Zone ChillBrite® 4000K LED lighting, Zero Zone CoolView® Envision® doors.
 4. 208V (four-wire) service; 115/208V-1PH-60Hz; red and black AC Line, white AC neutral, green Safety Ground.
 5. Adequate ventilation must be provided to dissipate rejected heat from the top of the unit for proper performance. Clearance of less than 30" above the top of the shroud to the ceiling requires special design considerations. See Zero Zone self-contained Installation & Operation Manual for specific details.
 6. Does not include weight of packaged refrigeration unit. Weights include 2 end panels at 60 lbs. per pair.



Guardian® Merchandiser CGMC30 Specs

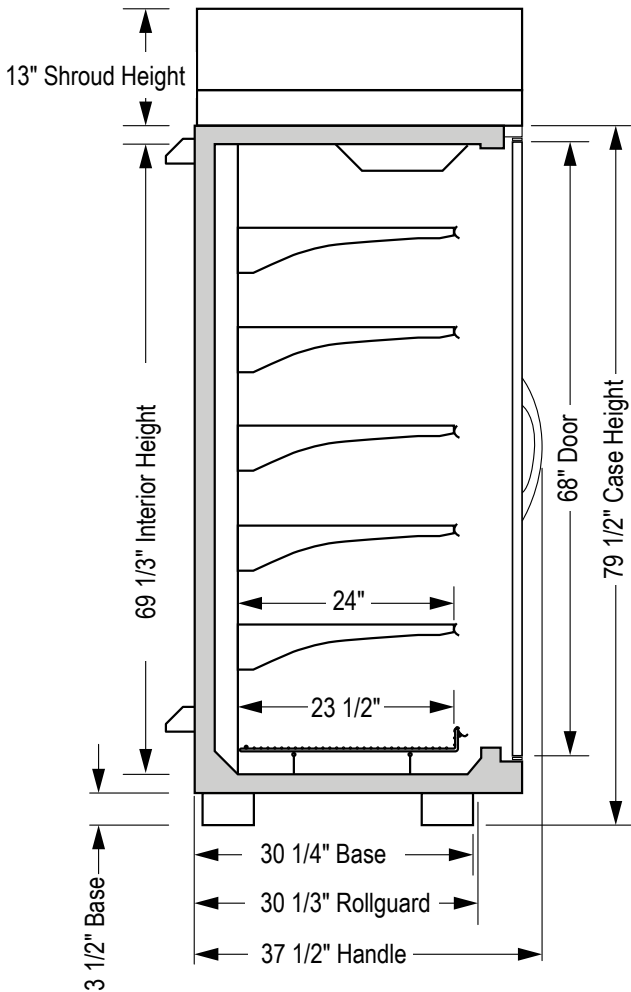
CGMC30 Self-Contained

CGMC30 Guardian® Top View



| Measurements | 2-Door | 3-Door | 4-Door | 5-Door |
|--------------------------------------|--------|--------|---------|---------|
| Case Length (in.) without End Panels | 60 7/8 | 91 3/8 | 121 3/4 | 152 1/4 |
| Case Length (in.) with End Panels | 65 7/8 | 96 3/8 | 126 3/4 | 157 1/4 |

CGMC30 Guardian® Top View



Guardian® Merchandiser CGLC30 Specs

Low Temp Reach-In Display Cases

2-Door, 3-Door, 4-Door, and 5-Door Cases

Applications



Ice Cream



Frozen Food

Quick Specs

Energy Usage (5-Door Daily)*
Standard: 42 kWh

Merchandising (5-Door)
Facings: 71.8 ft²
Packout: 143.4 ft³ with 30" wide x 24" deep shelves

Features

Go Green

Propane (R-290) is an environmentally friendly and natural refrigerant.

CoolView® Doors

30" wide x 68" tall CoolView® Envision® Doors

LED Lighting

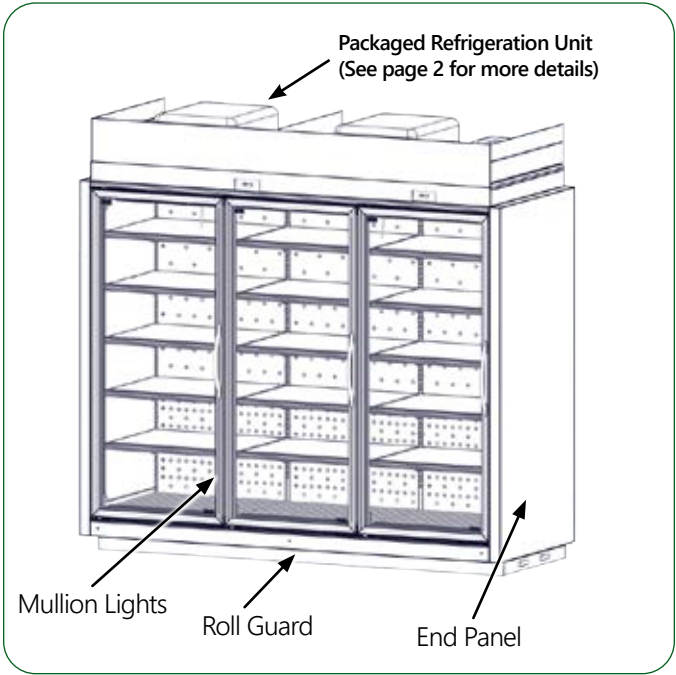
ChillBrite® 4000K LED Lighting

Additional Models

The Guardian® Merchandiser is also available in medium temp.

Continuous Lineup

Unlike traditional self-contained display cases, these grocery style merchandisers can be joined to make one continuous lineup.



Manuals and Instructions:
<https://www.zero-zone.com/cglc-cgmc>



Contact Us:

800-247-4496
www.zero-zone.com

Specifications are subject to change without notice. All dimensions are nominal.
Case designed to operate in an ambient temperature of 75°F and relative humidity of 55% or lower.



SS-135 Rev A • 11/19/2025
© 2025 Zero Zone, Inc.
Page 1 of 3





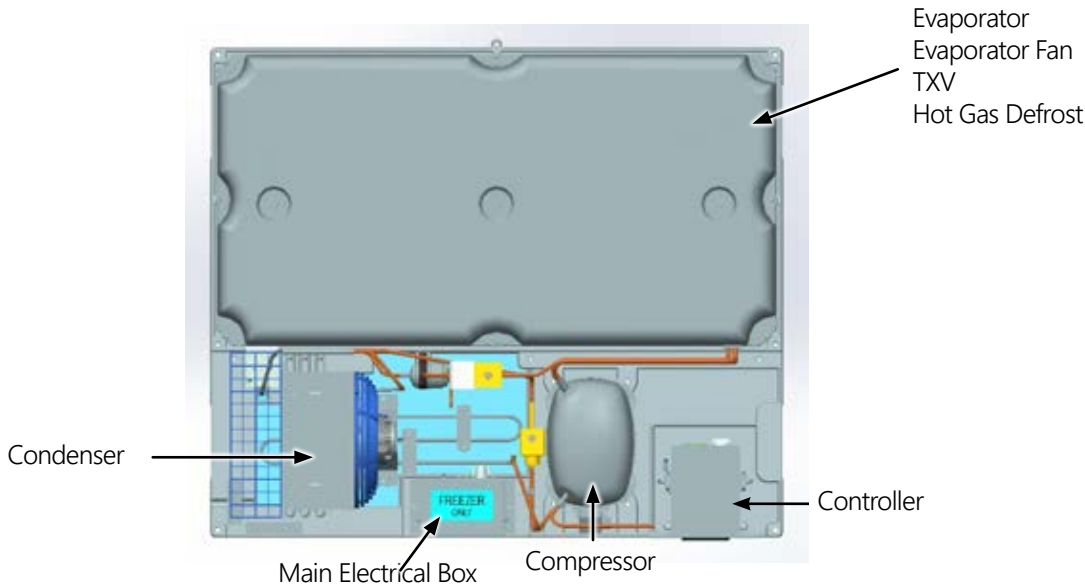
Standard Package

| R-290 Refrigerant | | | | |
|--|-------------------|-------------------|-------------------|-------------------|
| Refrigeration Data | 2-Door | 3-Door | 4-Door | 5-Door |
| Number of PRUs | 1 | 2 | 2 | 3 |
| Refrigerant Charge (g) ¹ | 135 | 270 | 270 | 360 |
| Zero Zone PRU Unit # | 69-0875-01 | 69-0875-01 | 69-0875-01 | 69-0875-01 |
| Total Weight of PRU(s) (lbs.) ² | 85 | 170 | 170 | 255 |
| Electrical & Energy Data ^{3, 4} | 2-Door | 3-Door | 4-Door | 5-Door |
| Daily Energy Use (kWh) | 16 | 25 | 31.8 | 42 |
| Amps (a) | 9.6 | 11.3 | 11.3 | 15.9 |
| Voltage/Phase/Frequency | 120/208V-1Ph-60Hz | 120/208V-1Ph-60Hz | 120/208V-1Ph-60Hz | 120/208V-1Ph-60Hz |
| NEMA Configuration | L14-20P | L14-20P | L14-20P | L14-20P |
| Rejected Heat (Btu/h) ⁵ | 2485 | 3710 | 4730 | 5970 |

Physical Data

| Case Calculations | 2-Door | 3-Door | 4-Door | 5-Door |
|---|--------|--------|--------|--------|
| Facings (ft. ²) | 28.7 | 42.5 | 57.3 | 71.8 |
| Packout (ft. ³) 24" Shelves | 57.3 | 86 | 114.7 | 143.4 |
| Weight (lbs.) ⁶ without End Panels | 630 | 900 | 1,160 | 1,510 |

CGLC30 Packaged Refrigeration Unit (PRU) Top View



Notes:

1. Refrigerant charge includes combined Packaged Refrigeration Unit.

2. Two people are required to lift a single PRU.

3. Data based on Zero Zone ChillBrite® 4000K LED lighting, Zero Zone CoolView® Envision® doors.

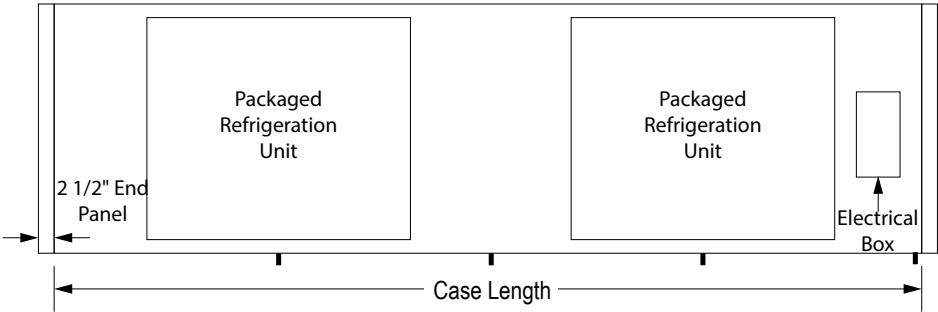
4. 208V (four-wire) service; 115/208V-1PH-60Hz; red and black AC Line, white AC neutral, green Safety Ground.

5. Adequate ventilation must be provided to dissipate rejected heat from the top of the unit for proper performance. Clearance of less than 30" above the top of the shroud to the ceiling requires special design considerations. See Zero Zone self-contained Installation & Operation Manual for specific details.

6. Does not include weight of packaged refrigeration unit. Weights include 2 end panels at 60 lbs. per pair.

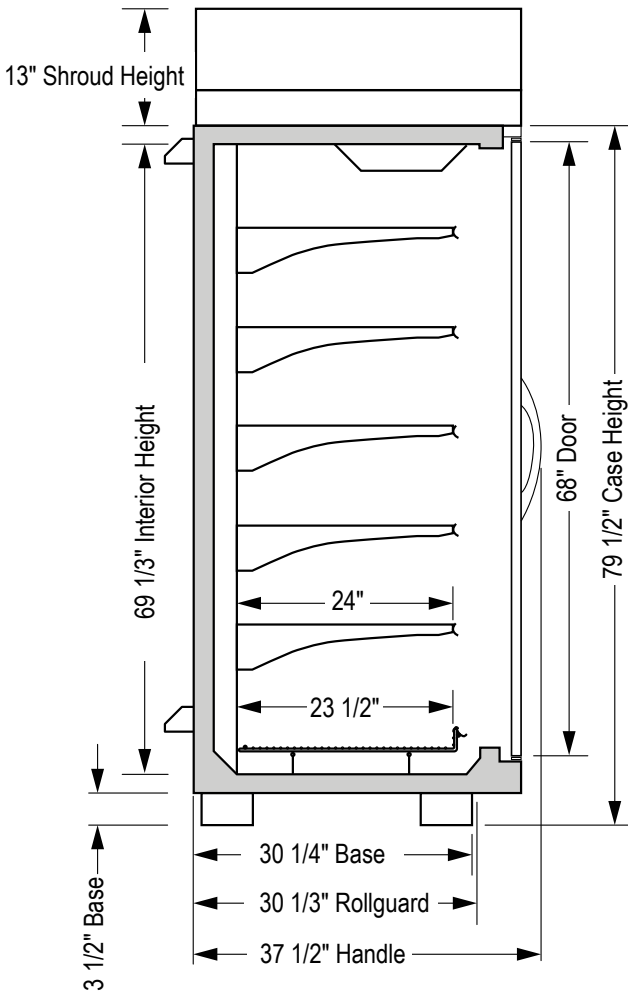


CGLC30 Top View



| Measurements | 2-Door | 3-Door | 4-Door | 5-Door |
|--------------------------------------|--------|--------|---------|---------|
| Case Length (in.) without End Panels | 60 7/8 | 91 3/8 | 121 3/4 | 152 1/4 |
| Case Length (in.) with End Panels | 65 7/8 | 96 3/8 | 126 3/4 | 157 1/4 |

CGLC30 Top View





the responsive company™

zero-zone.com • 800-247-4496

Connect with Us!



ZERO ZONE, INC. • ZERO-ZONE.COM
CASE & SYSTEMS • 800-247-4496
© 2025 Zero Zone, Inc. • NOV 2025

CT-05 REV A



1-YEAR PARTS
10-YEAR GLASS PACK
5-YEAR LED PARTS

