



## Crystal Merchandiser® RVMC30 Hybrid™ Specs

### Medium Temp Reach-In Remote Display Cases

2-Door, 3-Door, 4-Door, and 5-Door Cases

## Quick Specs

### Energy Use (Per Door Avg Daily)\*

**With Condensate Removal:** 3.2 kWh

**Without Condensate Removal:** 3.1 kWh

\* Standard package with R-404A Refrigerant

### Merchandising (5-Door)

**Facings:** 74.4 ft<sup>2</sup>

**Packout:** 136.4 ft<sup>3</sup> with 30" wide x 22" deep shelves

## Features & Options

### High Humidity

Control climate challenges with advanced humidity package.

### Additional Models

The Crystal® Hybrid™ medium temp lineup includes a standard and deep display case with 24" or 30" wide doors.

### LED Lighting

ChillBrite® 4000K LED Lighting

### CoolView® Doors

30" wide x 74" tall CoolView® Ultra® Doors

### Applications



Beverage



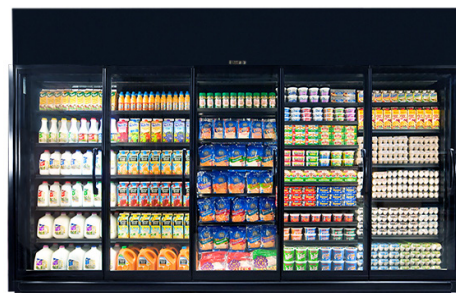
Dairy



Produce



Deli



## Refrigeration Data <sup>1</sup>

Set Points	°F
Evaporator Temperature <sup>2</sup>	28
Discharge Air Temperature (w/ 8°F Superheat)	33

Notes:

1. Crystal Merchandiser® Rear Load cases must be installed in front of the opening in a walk-in cooler.
2. For high-glide refrigerants, use dew point for unit sizing. Adjust evaporator pressure as needed to maintain discharge air temperatures.



Manuals and Instructions:  
<https://www.zero-zone.com/rvmc-rvlc>



### Contact Us:

800-247-4496

[www.zero-zone.com](http://www.zero-zone.com)

Specifications are subject to change without notice. All dimensions are nominal.  
 Case designed to operate in an ambient temperature of 75°F and relative humidity of 55% or lower.



SS-81 Rev G • 7/2/2025

© 2025 Zero Zone, Inc.

Page 1 of 3





## Standard Package

Refrigeration Data	R-404A Refrigerant				R-448A Refrigerant			
	2-Door	3-Door	4-Door	5-Door	2-Door	3-Door	4-Door	5-Door
Refrigerant Charge (lbs.) <sup>1</sup>	4.0	4.5	6.0	6.2	4.0	4.5	6.0	6.2
Zero Zone Condensing Unit #	69-10221	69-10324	69-10324	69-10045	69-10222	69-10235	69-10235	69-10237
Condensing Unit Crated Weight (lbs.)	70	70	70	120	70	70	70	120
Electrical & Energy Data <sup>2,3,4</sup>	With Condensate Removal System				With Condensate Removal System			
MOCP (amps) <sup>5</sup>	15	15	15	15	15	15	15	15
MCA (amps) <sup>6</sup>	7.7	12.7	12.8	14.5	7.7	12.7	12.8	14.5
Daily Energy Use (kWh)	7.8	8.8	11.4	15.2	7.2	8.2	10.5	14.1
Rejected Heat (Btu/h) <sup>7</sup>	1,115	1,255	1,625	2,168	1,025	1,159	1,499	2,009
Electrical & Energy Data <sup>2,3,4</sup>	Without Condensate Removal System				Without Condensate Removal System			
MOCP (amps) <sup>5</sup>	15	15	15	15	15	15	15	15
MCA (amps) <sup>6</sup>	7.7	6.7	6.8	8.5	7.7	6.7	6.8	8.5
Daily Energy Use (kWh)	7.6	8.5	11.0	14.7	7.0	7.8	10.1	13.6
Rejected Heat (Btu/h) <sup>7</sup>	1,087	1,212	1,568	2,096	997	1,116	1,442	1,938

## High Humidity Package<sup>8</sup>

Refrigeration Data	2-Door	3-Door	4-Door	5-Door	2-Door	3-Door	4-Door	5-Door
	4.0	4.5	6.0	6.2	4.0	4.5	6.0	6.7
Zero Zone Condensing Unit #	69-10221	69-10324	69-10045	69-10236	69-10222	69-10235	69-10237	69-10232
Condensing Unit Crated Weight (lbs.)	70	70	120	150	70	70	120	150
Electrical & Energy Data <sup>2,3,4</sup>	With Condensate Removal System				With Condensate Removal System			
MOCP (amps) <sup>5</sup>	15	15	15	25	15	15	15	20
MCA (amps) <sup>6</sup>	7.8	8.2	14.8	22.6	15.0	13.3	14.8	16.5
Daily Energy Use (kWh)	10.0	10.6	15.8	25.3	9.1	10.6	13.2	17.4
Rejected Heat (Btu/h) <sup>7</sup>	1,426	1,507	2,251	3,594	1,287	1,507	1,881	2,468
Electrical & Energy Data <sup>2,3,4</sup>	Without Condensate Removal System				Without Condensate Removal System			
MOCP (amps) <sup>5</sup>	15	15	15	20	15	15	15	15
MCA (amps) <sup>6</sup>	7.7	5.6	8.8	16.6	9.0	7.3	8.8	10.5
Daily Energy Use (kWh)	9.8	10.3	15.4	24.8	8.9	10.3	12.8	16.9
Rejected Heat (Btu/h) <sup>7</sup>	1,397	1,464	2,194	3,523	1,259	1,464	1,824	2,397

## Physical Data

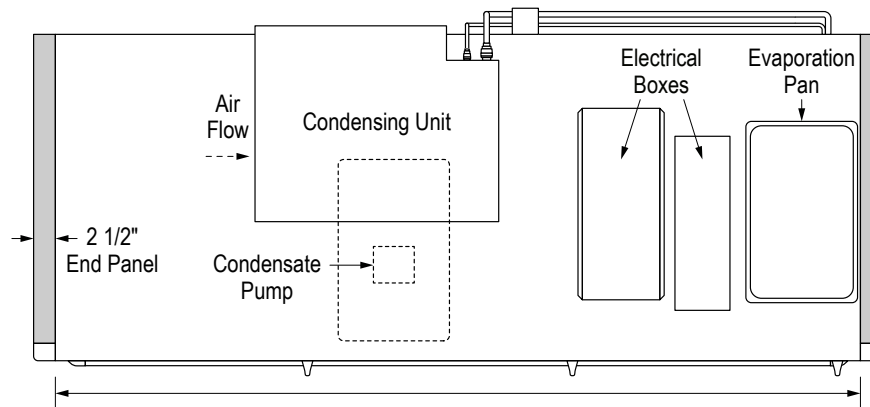
Case Calculations	2-Door	3-Door	4-Door	5-Door
Facings (ft. <sup>2</sup> )	30.1	44.9	59.7	74.4
Packout (ft. <sup>3</sup> ) 22" Shelves	55.2	82.3	109.3	136.4
Weight (lbs.) <sup>9</sup>	913	1,034	1,155	1,277

### Notes:

1. Refrigerant charge includes combined condensing unit and case charges.
2. Data based on Zero Zone ChillBrite® 4000K LED lighting, Zero Zone CoolView® Ultra™ doors, and SSC electronic fan motors. See separate reach-in case spec sheets for more details.
3. 208V (four-wire) service; 115/208V-1PH-60Hz; red and black AC Line, white AC neutral, green Safety Ground. Buck/boost transformer available for low voltage conditions.
4. Optional main service disconnect is available upon request.
5. MOCP = Maximum over-current protection.
6. MCA = Minimum current amps.
7. Adequate ventilation must be provided to dissipate rejected heat from the top of the unit for proper performance. Clearance of less than 30" above the top of the shroud to the ceiling requires special design considerations. See Zero Zone Hybrid™ Installation & Operation Manual for specific details.
8. High Humidity Package includes high-wattage anti-sweat components that prevent condensation on doors and components in ambient conditions up to 85°F and relative humidity of 70%. An anti-sweat controller is required for DOE compliance.
9. Does not include weight of condensing unit. Weights include 2 end panels at 60 lbs. per pair.



## RVMC30 Hybrid™ Top View



Measurements	2-Door	3-Door	4-Door	5-Door
Case Length (in.) without End Panels	62 1/8	92 1/2	123	153 3/8
Case Length (in.) with End Panels	67 1/8	97 1/2	128	158 3/8

## RVMC30 Hybrid™ End View

