



Crystal Merchandiser® RVLC30 Hybrid™ Specs

Low Temp Reach-In Remote Display Cases

2-Door, 3-Door, 4-Door, and 5-Door Cases

Applications



Ice Cream



Frozen Food

Quick Specs

Energy Use (Per Door Avg Daily)*

With Condensate Removal: 11.1 kWh

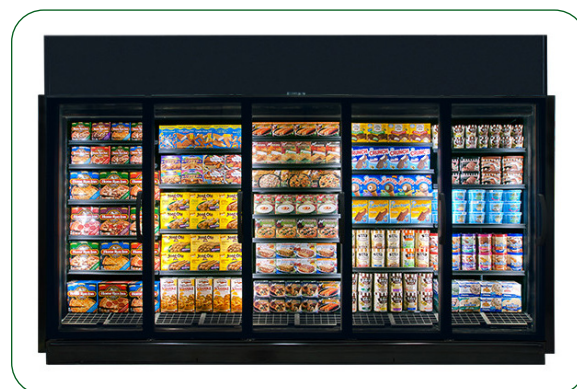
Without Condensate Removal: 10.36 kWh

*Standard package with R-404A Refrigerant

Merchandising (5-Door)

Facings: 70.2 ft²

Packout: 127.1 ft³ with 30" wide x 22" deep shelves



Features & Options

High Humidity

Control climate challenges with advanced humidity package.

CoolView® Doors

30" wide x 74" tall CoolView® Illusion® Doors

LED Lighting

ChillBrite® 4000K LED Lighting

Refrigeration Data

Set Points	Frozen Food (FF)	Ice Cream (IC)
Evaporator Temperature (°F) ¹	-7	-16
Discharge Air Temperature (°F) (w/ 8°F Superheat)	-3	-12

Notes:

- For high-glide refrigerants, use dew point for unit sizing. Adjust evaporator pressure as needed to maintain discharge air temperatures.



Manuals and Instructions:
<https://www.zero-zone.com/rvmc-rvlc>



Contact Us:

800-247-4496

www.zero-zone.com

Specifications are subject to change without notice. All dimensions are nominal.
 Case designed to operate in an ambient temperature of 75°F and relative humidity of 55% or lower.



SS-80 Rev F • 7/2/2025

© 2025 Zero Zone, Inc.

Page 1 of 3





Standard Package

Refrigeration Data
Refrigerant Charge (lbs.) ¹
Zero Zone Condensing Unit #
Condensing Unit Crated Weight (lbs.)
Electrical & Energy Data ^{2, 3, 4}
MOCP (amps) ⁵
MCA (amps) ⁶
Daily Energy Use (kWh)
Rejected Heat (Btu/h) ⁷
Electrical & Energy Data ^{2, 3, 4}
MOCP (amps) ⁵
MCA (amps) ⁶
Daily Energy Use (kWh)
Rejected Heat (Btu/h) ⁷

R-404A Refrigerant			
2-Door	3-Door	4-Door	5-Door
6.2	6.4	8.4	9.4
69-10236	69-10236	69-10220	69-10220
150	150	180	180
With Condensate Removal System			
25	25	40	40
20.0	21.8	27.7	32.2
23.1	34.0	42.9	53.4
3,285	4,829	6,101	7,585
Without Condensate Removal System			
25	25	40	40
16.5	17.8	26.5	27.9
22.7	33.4	42.1	52.3
3,228	4,743	5,986	7,442

R-448A Refrigerant			
2-Door	3-Door	4-Door	5-Door
5.9	6.0	6.5	8.0
69-10487	69-10219	69-10219	69-10219
163	166	166	166
With Condensate Removal System			
20	35	35	35
17.0	25.3	27.0	32.2
24.5	33.1	43.6	54.2
3,488	4,701	6,196	7,703
Without Condensate Removal System			
20	35	35	35
13.5	22.9	24.3	26.0
24.1	32.5	42.8	53.2
3,431	4,615	6,082	7,560

High Humidity Package ⁸

Refrigeration Data
Refrigerant Charge (lbs.) ¹
Zero Zone Condensing Unit #
Condensing Unit Crated Weight (lbs.)
Electrical & Energy Data ^{2, 3, 4}
MOCP (amps) ⁵
MCA (amps) ⁶
Daily Energy Use (kWh)
Rejected Heat (Btu/h) ⁷
Electrical & Energy Data ^{2, 3, 4}
MOCP (amps) ⁵
MCA (amps) ⁶
Daily Energy Use (kWh)
Rejected Heat (Btu/h) ⁷

2-Door	3-Door	4-Door	5-Door
6.2	6.4	8.4	9.4
69-10236	69-10220	69-10220	69-10220
150	180	180	180
With Condensate Removal System			
25	40	40	40
20.0	27.5	27.7	32.2
29.5	41.3	54.5	67.7
4,187	5,876	7,744	9,681
Without Condensate Removal System			
25	40	40	40
17.1	26.0	27.9	29.7
29.1	40.7	52.0	66.6
4,130	5,790	7,393	9,475

2-Door	3-Door	4-Door	5-Door
5.9	6.0	6.5	8.0
69-10487	69-10219	69-10219	69-10219
163	166	166	166
With Condensate Removal System			
20	35	35	35
17.0	25.3	27.0	32.2
30.5	41.0	54.1	67.2
4,338	5,835	7,689	9,551
Without Condensate Removal System			
20	35	35	35
14.1	23.8	25.4	27.1
30.1	40.4	53.3	66.2
4,281	5,749	7,575	9,408

Physical Data

Case Calculations
Facings (ft. ²)
Packout (ft. ³) 22" Shelves
Weight (lbs.) ⁹

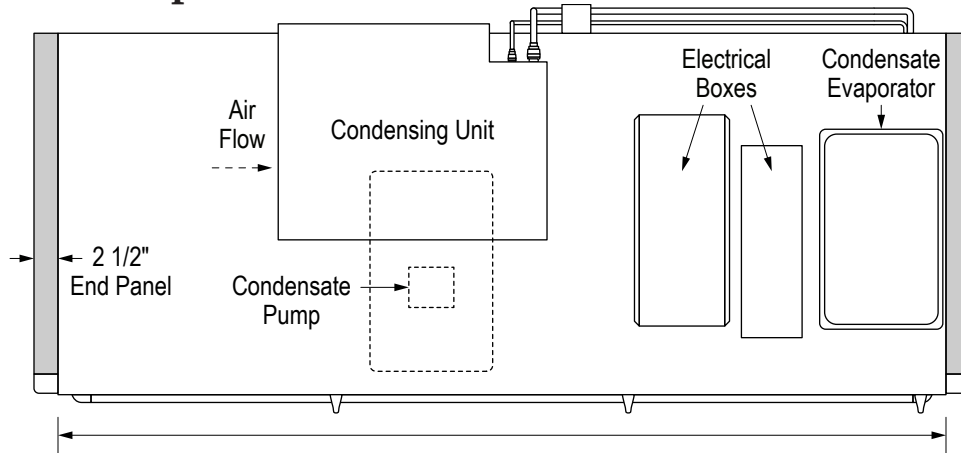
2-Door	3-Door	4-Door	5-Door
28.4	42.3	56.3	70.2
51.5	76.7	101.9	127.1
755	1,055	1,420	1,800

Notes:

1. Refrigerant charge includes combined condensing unit and case charges.
2. Data based on Zero Zone ChillBrite® 4000K LED lighting, Zero Zone CoolView® Ultra™ doors, and SSC electronic fan motors. See separate reach-in case spec sheets for more details.
3. 208V (four-wire) service; 115/208V-1PH-60Hz; red and black AC Line, white AC neutral, green Safety Ground. Buck/boost transformer available for low voltage conditions.
4. Optional main service disconnect is available upon request.
5. MOCP = Maximum over-current protection.
6. MCA = Minimum current amps.
7. Adequate ventilation must be provided to dissipate rejected heat from the top of the unit for proper performance. Clearance of less than 30" above the top of the shroud to the ceiling requires special design considerations. See Zero Zone Hybrid™ Installation & Operation Manual for specific details.
8. High Humidity Package includes high-wattage anti-sweat components that prevent condensation on doors and components in ambient conditions up to 85°F and relative humidity of 70%. An anti-sweat controller is required for DOE compliance.
9. Does not include weight of condensing unit. Weights include 2 end panels at 60 lbs. per pair.



RVLC30 Hybrid™ Top View



Measurements	2-Door	3-Door	4-Door	5-Door
Case Length (in.) without End Panels	62 1/8	92 1/2	123	153 3/8
Case Length (in.) with End Panels	67 1/8	97 1/2	128	158 3/8

RVLC30 Hybrid™ End View

