



Reveal Merchandiser® ORMC82(L/M/H)-(B/D/P) Hybrid™ Specs

Medium Temp Open Multi-Deck Reach-In Remote Display Cases

4', 6', 8', and 12' Long Cases with Low (L), Medium (M) or High (H) Sills;
Beverage (B), Dairy or Deli (D), Produce (P), Meat (M), and Floral (F)

Quick Specs

Energy Use (Per Foot Average)*

With Condensate Removal: 4.8 kWh

Without Condensate Removal: 4.8 kWh

* R-404A Refrigerant

Merchandising (12')

Facings: 63.4 ft² with Medium Sill

Packout: 85.7 ft³ with 30" x 22" deep shelves

Applications



Beverage



Dairy



Deli



Produce



Meat



Floral

Features & Options

LED Lighting

ChillBrite® 4000K LED Lighting for the canopy, sill, or undershelf.

Medium or High Sills

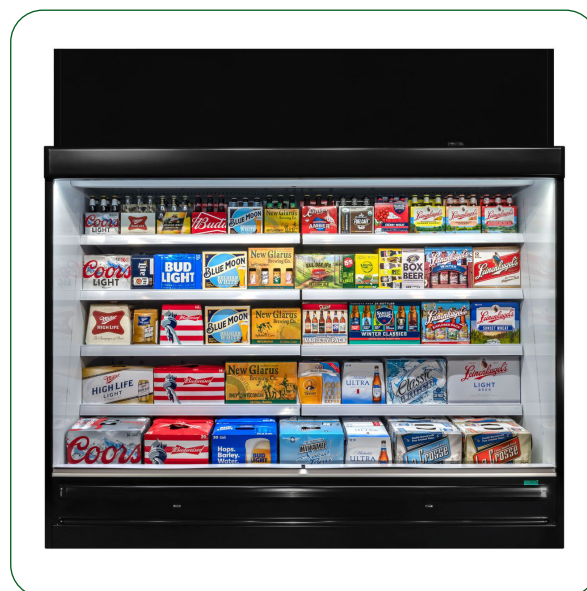
Maximize facings with the low sill, or increase efficiency with the medium sill.

Enhance Your Reveal

Accessories include mirrors, night curtains, spray hose connection, and more.

Additional Models

The Reveal Hybrid™ is also available with doors.



Manuals and Instructions:
<https://www.zero-zone.com/ormc>



Contact Us:

800-247-4496

www.zero-zone.com

Specifications are subject to change without notice. All dimensions are nominal.
Case designed to operate in an ambient temperature of 75°F and relative humidity of 55% or lower.



SS-93 Rev G • 9/26/2024

© 2024 Zero Zone, Inc.

Page 1 of 3





Standard Package

Refrigeration Data	R-404A Refrigerant				R-448A Refrigerant			
	4'	6'	8'	12'	4'	6'	8'	12'
Refrigerant Charge (lbs.) ¹	5.3	6.5	7.5	9.5	5.3	6.5	7.8	9.5
Zero Zone Condensing Unit #	69-10236	69-10220	69-10220	69-10076	69-10423	69-10421	69-10422	69-10422
Condensing Unit Crated Weight (lbs.)	150	180	180	260	150	150	260	260
Electrical & Energy Data ^{2, 3, 4, 5}	With Condensate Removal System				With Condensate Removal System			
MOCP (amps) ⁶	20	30	30	40	20	30	40	40
MCA (amps) ⁷	15.3	22.7	23.2	35.3	15.3	22.7	34.7	35.3
Daily Energy Use (kWh)	20.4	28.9	37.9	52.9	24.1	33.0	41.6	61.0
Rejected Heat (Btu/h) ⁸	2,906	4,103	5,393	7,518	3,419	4,695	5,910	8,666
Electrical & Energy Data ^{3, 4, 9}	Without Condensate Removal System				Without Condensate Removal System			
MOCP (amps) ⁶	20	30	30	40	20	30	40	40
MCA (amps) ⁷	14.7	22.1	22.6	34.7	14.7	22.1	34.1	34.7
Daily Energy Use (kWh)	20.4	28.9	37.9	52.9	24.1	33.0	41.6	61.0
Rejected Heat (Btu/h) ⁸	2,906	4,103	5,393	7,518	3,419	4,695	5,910	8,666
Evaporation Pan Data ⁹	4'	6'	8'	12'	4'	6'	8'	12'
Outlets Required	1	1	2	2	1	1	2	2
Amps	12.5	12.5	25.0	25.0	12.5	12.5	25.0	25.0
Watts	1,500	1,500	3,000	3,000	1,500	1,500	3,000	3,000

Physical Data

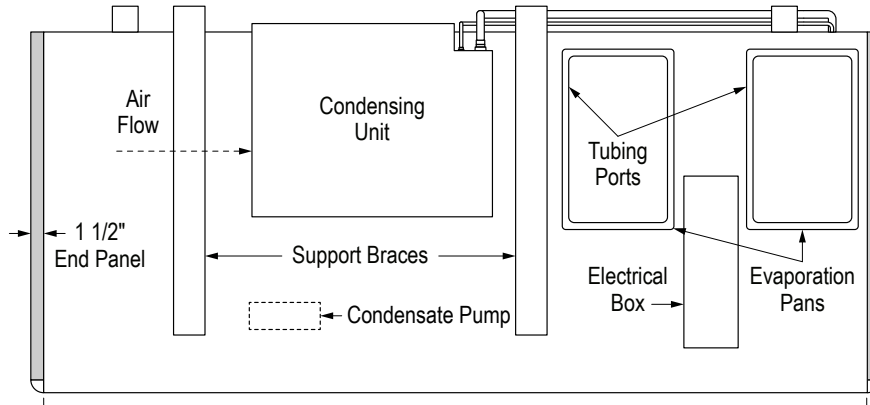
Case Calculations	4'	6'	8'	12'
Facings (ft. ²) with medium sills	21.1	31.7	42.2	63.4
Packout (ft. ³) with 4 rows of 22" Deep Shelves	28.6	42.8	57.1	85.7
Weight (lbs.) ¹⁰	452	678	791	1,222

Notes:

1. Refrigerant charge includes combined condensing unit and case charges.
2. Data based on 1 row of canopy lighting (Zero Zone ChillBrite® 4000K LED lighting), ECM electronic fan motors, and medium sill height. **See separate remote case spec sheets for more details.**
3. 208V (four-wire) service; 115/208V-1PH-60Hz; red and black AC Line, white AC neutral, green Safety Ground. Buck/boost transformer available for low voltage conditions.
4. Optional main service disconnect is available upon request.
5. Energy data provided is for dairy/produce application.
6. MOCP = Maximum over-current protection.
7. MCA = Minimum current amps.
8. Adequate ventilation must be provided to dissipate rejected heat from the top of the unit for proper performance. Clearance of less than 30" above the top of the shroud to the ceiling requires special design considerations. See Zero Zone Hybrid™ Installation & Operation Manual for specific details.
9. 4' and 6' cases use 1 evaporation pan. 8' and 12' cases use 2 evaporation pans. Evaporation pans require a separate 115V/1/60Hz electrical supply provided by the end user.
10. Does not include weight of condensing unit. Weights include 2 end panels at 30 lbs. per pair.



ORMC82 Hybrid™ Top View



Measurements	4'	6'	8'	12'
Case Length (in.) without End Panels	48 3/4	72 1/2	96 1/4	144
Case Length (in.) with End Panels	51 3/4	75 1/2	99 1/4	147

ORMC82 Hybrid™ Top View

Standard shipping height is 87" due to 3" support braces. Contact factory for other base configurations.

