



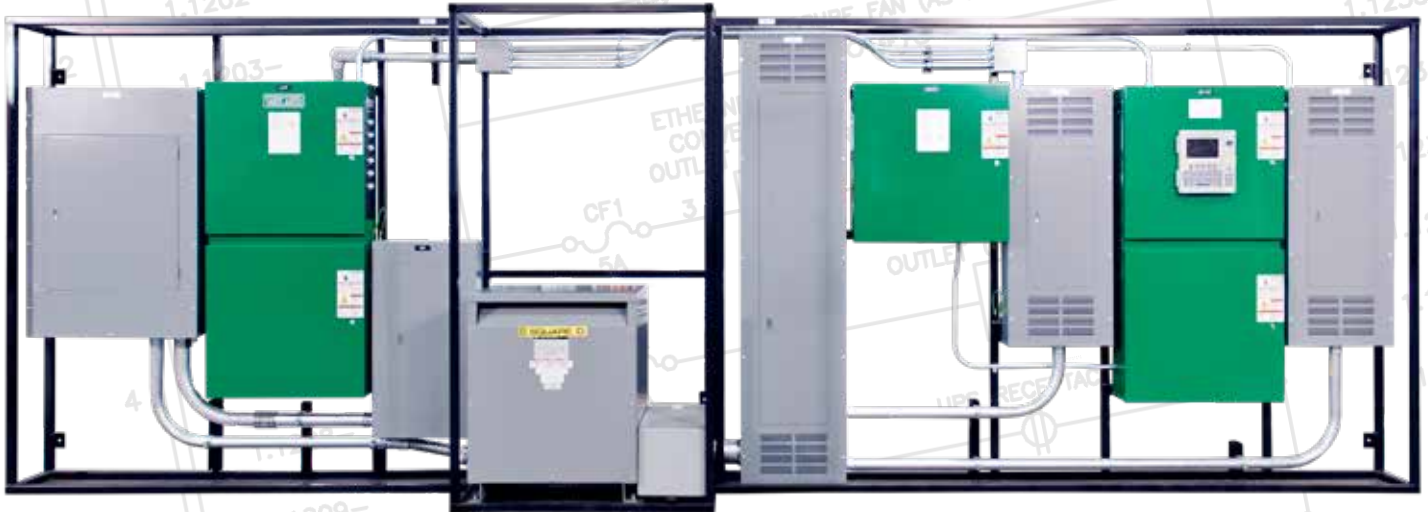
INDUSTRIAL CONTROLS

For Zero Zone Refrigeration Systems

INDUSTRIAL CONTROLS

ADAPTIVE DESIGN. FLEXIBLE OPERATION. RESPONSIVE SERVICE.

Zero Zone customers are staying in front of today's changing markets with systems that deliver the power of customized solutions with the reliability and efficiency of a standardized platform. Field-proven and factory-tested components are scalable to meet your unique project needs.



Electrical / Motor Controls Including:

- Complete Power Centers
- UL/CSA Labeled Systems
- NEMA Enclosures
- Factory-Mounted Disconnects
- Motor Starters and Drives

Complete Control Functions:

- Compressor operation, safeties, and sequencing
- Condenser operation and sequencing
- Evaporator operation for cooling and defrost
- Pump operation
- Process component control and status
- Monitoring and alarm

INNOVATIVE SOLUTIONS. EXPERIENCED ENGINEERING. QUALITY CONSTRUCTION.

Zero Zone provides you a fully-integrated system with in-house engineering, UL/CSA certified fabrication shop, and factory-tested and inspected assemblies manufactured to meet stringent quality standards.

Standard Features:

- Local Control
- Digital / Analog I-O
- Micro-processor and electro-mechanical controls

Systems Options:

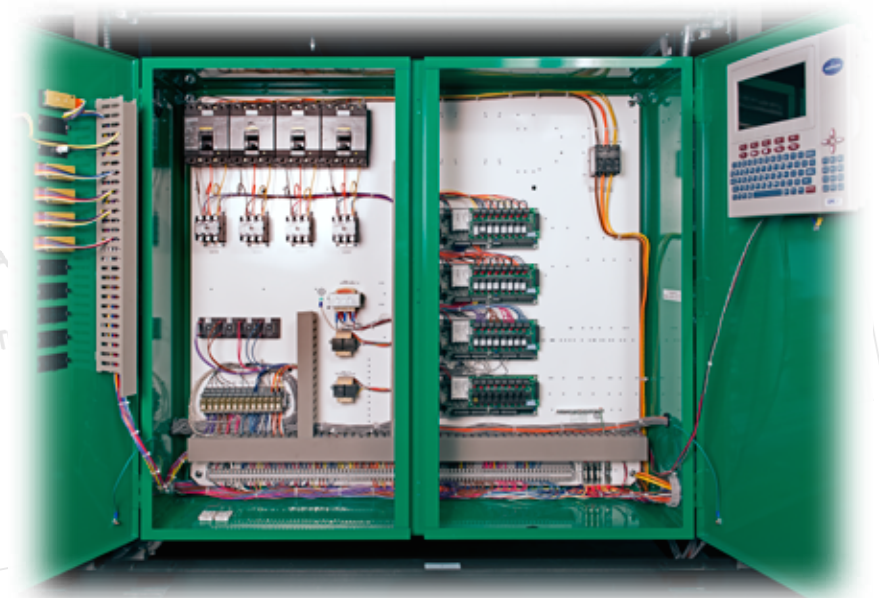
- Remote Monitoring and Control
- Touch Screen Interface
- Graphical Interface
- Active Alarming
- Customer-Specified Components

OEM Vendor Partners:

- Allen Bradley – Rockwell Automation
- CPC
- Danfoss
- KE2
- Microthermal
- Opto
- RDM
- And Other Manufacturers...



WIRE COLOR KEY	
0-9	BLACK
10-19	BLUE
20-29	RED
30-39	YELLOW
40-49	ORANGE
50-59	PURPLE



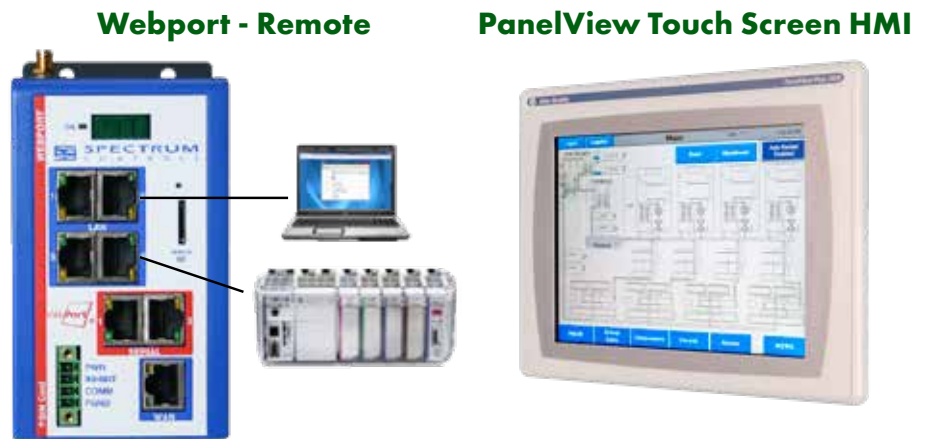
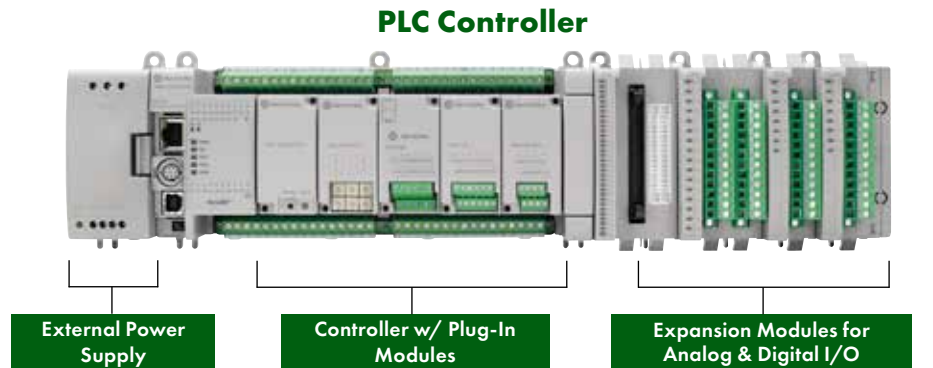
HARDWARE OPTIONS

Custom Features. Field-Proven Components. Flexible Solutions

Today's refrigeration systems demand reliability, optimal performance, and ease of use. Zero Zone industrial controls meet your needs with greater capability and a wider range of options than ever before. Take your system operation to a new level with custom features like integrated communications, power management, and offsite monitoring for remote alarm, control, and troubleshooting.

Allen Bradley

- **PLC** (Programmable Logic Controller) - CompactLogix or Micro 850
- **HMI** (Human Machine Interface) - PanelView Plus 6 (10" standard)
- **IO** (Inputs and Outputs) - 1769 or 1734
- **VFD** (Variable Frequency Drive) - PowerFlex400
- **Spectrum Webport** - Remote Connectivity
- **Ethernet Switch** - Connects HMI, IO, VFDs over Ethernet (common protocol)



KE2 Therm Solutions

- Distributed Evaporator Controller
- Reduced Field Wiring
- Integrated Communications
- Optimal Performance



KE2 Evaporator Controller

- TEV/EEV
- Room Temperature
- Evaporator Fans
- Compressor / Liquid Line Solenoid
- Defrost Heaters
- Multiple Alarms

