



# Crystal™ Merchandiser RVMC30 Hybrid™ Specifications

Medium Temp Hybrid Reach-Ins with 30" x 74" CoolView™ Doors

RVMC30-D,-B,-P,-M (D=Dairy/Deli, B=Beverage, P=Produce, M=Meat)

**Note:** All Zero Zone display cases manufactured for shipment within the U.S. meet or exceed current DOE energy requirements.

## PHYSICAL DATA

	2RVMC30	3RVMC30	4RVMC30	5RVMC30
Facings (ft. <sup>2</sup> )	30.1	44.9	59.7	74.4
Packout (ft. <sup>3</sup> ) 22" Shelves	55.2	82.3	109.3	136.4
Packout (ft. <sup>3</sup> ) 24" Shelves	59.4	88.5	117.6	146.8
Weight (lbs.)*	903	1,020	1,137	1,254

\* Does not include weight of condensing unit. Weights include 2 end panels at 30 lbs each.

## ELECTRICAL DATA <sup>1, 2</sup>

**Zero Zone ChillBrite™ 4 LED Lighting, CoolView™ Doors, SSC Fan Motors w/ Cond Evap System <sup>6</sup>**

MOCP (amps) <sup>3</sup>	15.0	15.0	15.0	15.0
MCA (amps)	8.3	8.3	11.9	11.9

## ENERGY DATA

Daily Energy Use (kWh)	7.5	10.7	12.8	15.9
Rejected Heat (Btuh) <sup>4</sup>	1,063	1,526	1,813	2,264

## R-404A CHARGE

R-404A Charge (lbs.) <sup>5</sup>	3.5	4.0	5.5	5.5
-----------------------------------	-----	-----	-----	-----

## REFRIGERATION

ZZ Condensing Unit No.	69-9634	69-9634	69-9636	69-9636
Crated Weight (lbs.)	100	100	100	100

## ELECTRICAL DATA <sup>1, 2</sup>

**Zero Zone ChillBrite™ 4 LED Lighting, CoolView™ Doors, SSC Fan Motors w/o Cond Evap System <sup>6</sup>**

MOCP (amps) <sup>3</sup>	15.0	15.0	15.0	15.0
MCA (amps)	8.3	8.3	8.3	8.9

## ENERGY DATA

Daily Energy Use (kWh)	7.3	10.4	12.4	15.4
Rejected Heat (Btuh) <sup>4</sup>	1,034	1,484	1,756	2,193

## R-404A CHARGE

R-404A Charge (lbs.) <sup>5</sup>	3.5	4.0	5.5	5.5
-----------------------------------	-----	-----	-----	-----

## REFRIGERATION

ZZ Condensing Unit No.	69-9634	69-9634	69-9636	69-9636
Crated Weight (lbs.)	100	100	100	100

### Notes:

- 208V 4-wire service; 115/208V-1PH-60HZ; red & black power, white neutral, green ground. Buck/boost transformer available for low voltage conditions.
- Main service disconnect is not provided.
- MOCP = Maximum over-current protection.
- Adequate ventilation must be provided to dissipate rejected heat from the top of the unit for proper performance. Clearance of less than 30" above the top of the shroud to the ceiling requires special design considerations. See Zero Zone Hybrid™ Installation and Operation Manual for specific details.
- Refrigerant charge includes combined condensing unit and case charges.
- See separate reach-in case spec sheets for additional details: RVMC30.

### Factory Installed Hybrid™ Features:

- Refrigeration piping with quick connect couplings and refrigerant charge.
- Pre-wired and labeled for easy connection.
- Electronic control includes: time clock, temperature and defrost control, visual and audible temperature alarm, and network communication capability.

### Field Installed Hybrid™ Features:

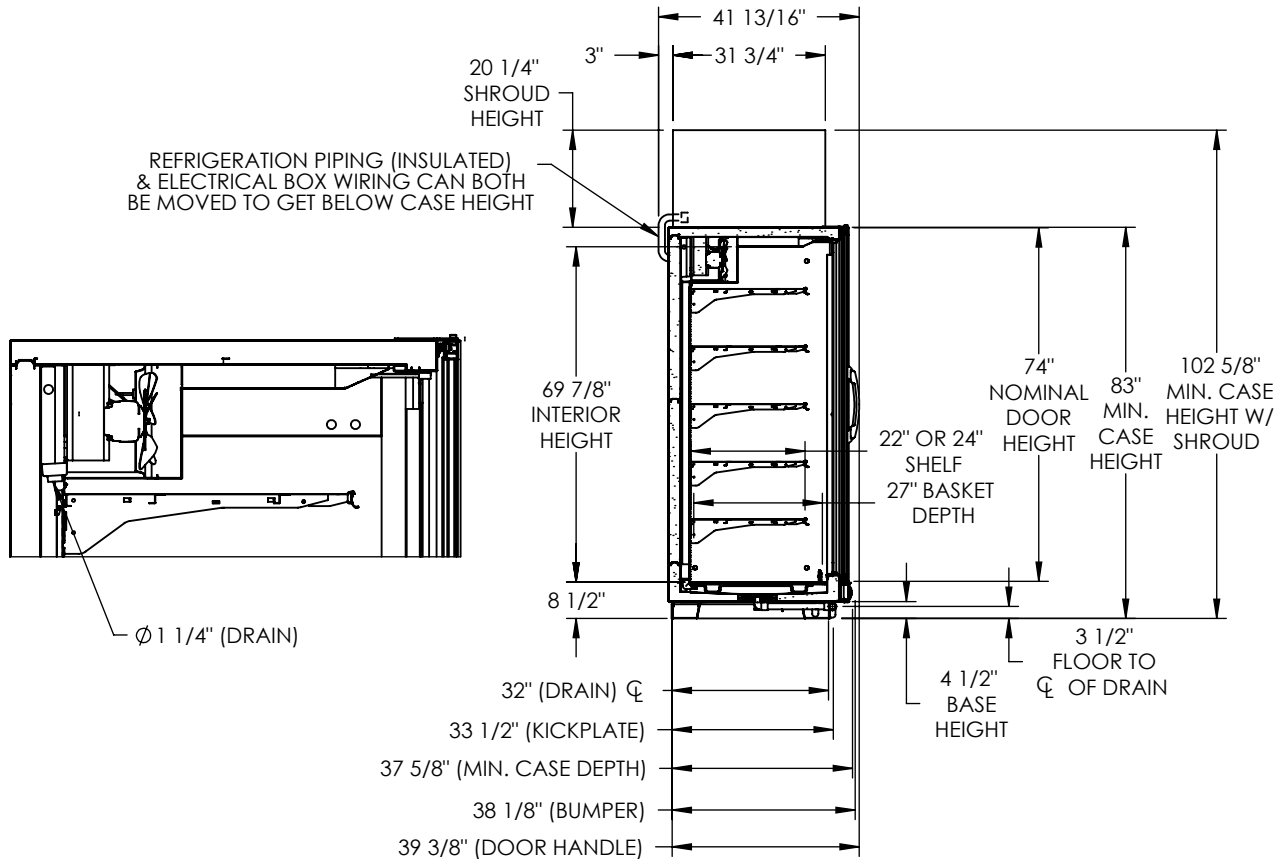
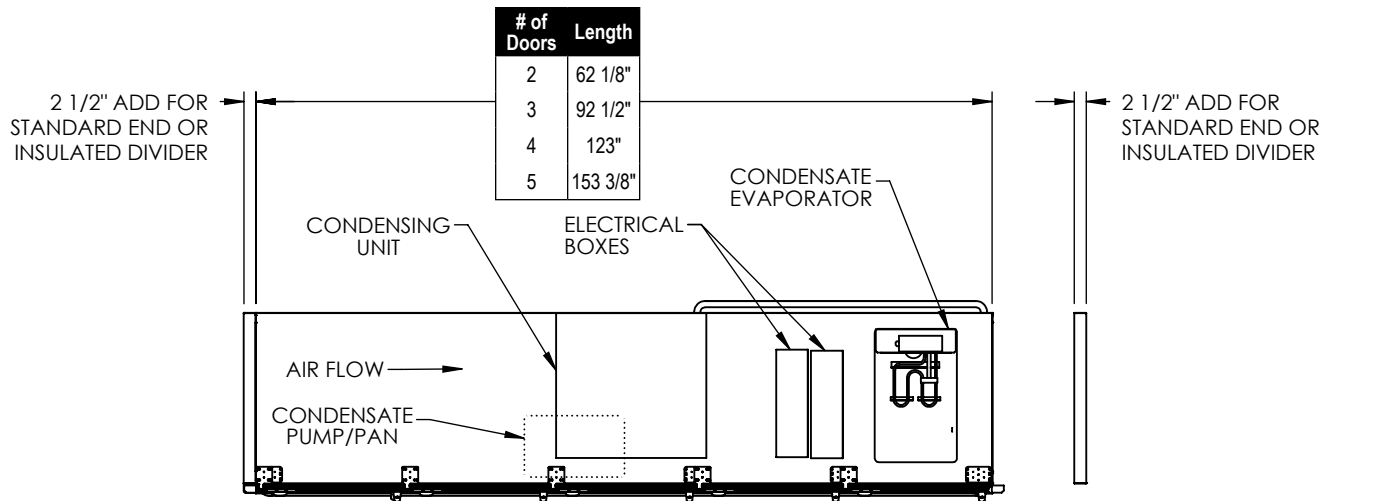
- 20 1/4" tall aluminum shroud (front and sides standard, rear optional). Consult factory for other options.
- Condensing unit with quick connect threaded couplings.
- Condensate collection and removal system: collection pan, pump, float switch, condensate dissipation pan with heater element, and connecting tubing.



# Crystal™ Merchandiser RVMC30 Hybrid™ Specifications

Medium Temp Hybrid Reach-Ins with 30" x 74" CoolView™ Doors

RVMC30-D,-B,-P,-M (D=Dairy/Deli, B=Beverage, P=Produce, M=Meat)



Optional base configurations are available to fit case through doorways as low as 80". Consult the factory for details.

- Peg, gravity-feed, and other merchandising options available.
- Door size 30" X 74".
- All dimensions are nominal.

3/22/17

Specifications are subject to change without notice.  
Case designed to operate in an ambient temperature of 75°F and relative humidity of 55% or lower.



Zero Zone, Inc. | 110 N Oakridge Drive | North Prairie, WI 53153-9792  
Toll Free: 800-247-4496 | Fax: 262-392-6450  
Zero-Zone.com



Intertek