



HIGHLIGHT
merchandise®

Highlight Merchandise® RHMC30 Hybrid Specs

Medium Temp Reach-In Remote Display Cases

1-Door, 2-Door, 3-Door, 4-Door, and 5-Door Cases

Quick Specs

Energy Use (Per Door Avg Daily)*

With Condensate Removal: 3.7 kWh

Without Condensate Removal: 3.6 kWh

*Standard Package with R-404A Refrigerant

Merchandising (5-Door)

Facings: 68.2 ft²

Packout: 136.4 ft³ with 30" wide x 24" deep shelves

Features & Options

High Humidity

Control climate challenges with advanced humidity package.

Additional Models

The Highlight® Hybrid™ medium temp lineup offers standard, and tall cases. The standard cases are available with 24" or 30" wide doors.

LED Lighting

ChillBrite® 4000K LED Lighting

CoolView® Doors

30" wide x 68" tall CoolView® Envision® Doors

Applications



Beverage



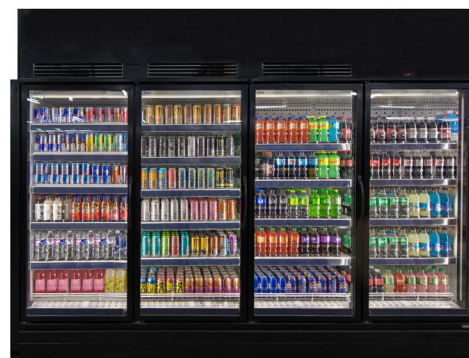
Dairy



Deli



Produce



Refrigeration Data

Set Points	°F
Evaporator Temperature ¹	28
Discharge Air Temperature (w/ 8°F Superheat)	33

Notes:

- For high-glide refrigerants, use dew point for unit sizing. Adjust evaporator pressure as needed to maintain discharge air temperatures.



Manuals and Instructions:
<https://www.zero-zone.com/rvmc-rvlc>



Contact Us:

800-247-4496

www.zero-zone.com

Specifications are subject to change without notice. All dimensions are nominal.
Case designed to operate in an ambient temperature of 75°F and relative humidity of 55% or lower.



SS-119 Rev F • 7/2/2025
© 2025 Zero Zone, Inc.
Page 1 of 3





Standard Package

Refrigeration Data	
Refrigerant Charge (lbs.) ¹	
Zero Zone Condensing Unit #	
Condensing Unit Crated Weight (lbs.)	
Electrical & Energy Data ^{2, 3, 4}	
MOCP (amps) ^{5, 7}	
MCA (amps) ^{6, 7}	
Daily Energy Use (kWh)	
Rejected Heat (Btu/h) ⁸	
Electrical & Energy Data ^{2, 3, 4}	
MOCP (amps) ^{5, 7}	
MCA (amps) ^{6, 7}	
Daily Energy Use (kWh)	
Rejected Heat (Btu/h) ⁸	

R-404A Refrigerant				
1-Door	2-Door	3-Door	4-Door	5-Door
3.0	3.0	4.0	5.1	6.2
69-10042	69-10042	69-10221	69-10324	69-10324
61	61	69	66	66
With Condensate Removal System				
15	15	15	15	15
8.2	7.7	8.5	14.2	14.8
3.6	7.1	11.7	12.8	15.9
506	1,013	1,667	1,821	2,261
Without Condensate Removal System				
15	15	15	15	15
6.4	5.7	7.7	8.2	8.8
3.5	6.9	11.4	12.4	15.4
492	984	1,624	1,763	2,190

R-448A Refrigerant				
1-Door	2-Door	3-Door	4-Door	5-Door
3.0	3.0	4.0	5.1	6.2
69-9933	69-9933	69-10222	69-10235	69-10237
61	61	69	66	120
With Condensate Removal System				
15	15	15	15	20
8.2	7.7	8.5	14.2	16.0
3.3	6.6	10.9	12.0	15.6
468	937	1,551	1,706	2,222
Without Condensate Removal System				
15	15	15	15	15
6.4	5.7	7.7	8.2	10.0
3.2	6.4	10.6	11.6	15.1
454	908	1,508	1,649	2,150

High Humidity Package ⁹

Refrigeration Data	
Refrigerant Charge (lbs.) ¹	
Zero Zone Condensing Unit #	
Condensing Unit Crated Weight (lbs.)	
Electrical & Energy Data ^{2, 3, 4}	
MOCP (amps) ^{5, 7}	
MCA (amps) ^{6, 7}	
Daily Energy Use (kWh)	
Rejected Heat (Btu/h) ⁸	
Electrical & Energy Data ^{2, 3, 4}	
MOCP (amps) ^{5, 7}	
MCA (amps) ^{6, 7}	
Daily Energy Use (kWh)	
Rejected Heat (Btu/h) ⁸	

R-404A Refrigerant				
1-Door	2-Door	3-Door	4-Door	5-Door
3.0	3.0	4.0	5.1	6.2
69-10042	69-10221	69-10324	69-10045	69-10236
61	69	66	120	150
With Condensate Removal System				
15	15	20	20	30
8.8	8.8	15.1	17.5	25.5
5.9	12.9	15.0	22.2	32.9
832	1,840	2,130	3,151	4,675
Without Condensate Removal System				
15	15	15	15	20
6.9	7.7	9.1	11.5	19.5
5.8	12.7	14.7	21.8	32.4
818	1,811	2,088	3,094	4,604

R-448A Refrigerant				
1-Door	2-Door	3-Door	4-Door	5-Door
3.0	3.0	4.0	5.1	6.7
69-9933	69-10222	69-10235	69-10237	69-10232
61	69	66	120	150
With Condensate Removal System				
15	15	20	20	20
8.8	8.8	15.1	17.5	19.4
5.4	11.9	15.0	19.2	23.3
761	1,687	2,130	2,728	3,314
Without Condensate Removal System				
15	15	15	15	15
6.9	7.7	9.1	11.5	13.4
5.3	11.7	14.7	18.8	22.8
747	1,659	2,088	2,671	3,243

Physical Data

Case Calculations	
Facings (ft. ²)	
Packout (ft. ³) 24" Shelves	
Weight (lbs.) ¹⁰	

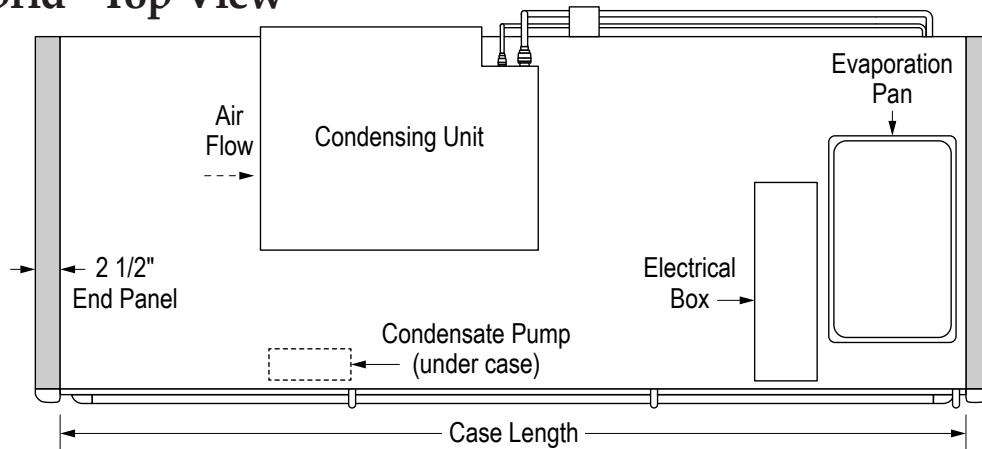
1-Door	2-Door	3-Door	4-Door	5-Door
13.6	27.3	40.9	54.5	68.2
27.3	54.5	81.9	109.0	136.4
532	783	1,033	1,343	1,683

Notes:

- Refrigerant charge includes combined condensing unit and case charges.
- Data based on Zero Zone ChillBrite® 4000K LED lighting, Zero Zone CoolView® Envision® doors, and SSC electronic fan motors. See separate remote case spec sheets for more details.
- 208V 4-wire service; 115/208V-1PH-60HZ; red & black power, white neutral, green ground. Buck/boost transformer available for low voltage conditions.
- Optional main service disconnect is available upon request.
- MOCP (Maximum Over-Current Protection) is the maximum circuit breaker size that can be used to properly protect the product.
- MCA (Minimum Circuit Ampacity) is used to calculate the minimum wire size. This is selected so wires will not overheat in typical operating conditions and prevent nuisance circuit breaker trips.
- Zero Zone recommends that a circuit breaker size should be larger than the MCA, but smaller than or equal to the MOCP. For example, if the equipment is listed having an MCA of 36.8 amps and an MOCP of 45 amps, a 40 amp or 45 amp circuit breaker would be acceptable.
- Adequate ventilation must be provided to dissipate rejected heat from the top of the unit for proper performance. Clearance of less than 30" above the top of the shroud to the ceiling requires special design considerations. See Zero Zone Hybrid™ Installation & Operation Manual for specific details.
- High-Humidity Package includes high-wattage anti-sweat components that prevent condensation on doors and components in ambient conditions up to 85°F and relative humidity of 70%. An anti-sweat controller is required for DOE compliance.
- Does not include weight of condensing unit. Weights include 2 end panels at 60 lbs. per pair.



RHMC30 Hybrid™ Top View



Measurements	1-Door	2-Door	3-Door	4-Door	5-Door
Case Length (in.) without End Panels	30 1/2	60 7/8	91 3/8	121 3/4	152 1/4
Case Length (in.) with End Panels	35 1/2	65 7/8	96 3/8	126 3/4	157 1/4

RHMC30 Hybrid™ End View

