



**HIGHLIGHT**  
merchandise®

## Highlight Merchandise® RHCC24 Hybrid™ Specs

Medium Temp Reach-In Remote Display Cases

4-Door, and 6-Door Cases

### Quick Specs

#### Energy Use (Per Door Avg Daily)\*

With Condensate Removal: 2.7 kWh

Without Condensate Removal: 2.6 kWh

\*Standard Package with R-404A Refrigerant

#### Merchandising (6-Door)

Facings: 64.5 ft<sup>2</sup>

Packout: 127.2 ft<sup>3</sup> with 30" wide x 24" deep shelves

### Features & Options

#### High Humidity

Control climate challenges with advanced humidity package.

#### CoolView® Doors

24" wide x 68" tall CoolView® Envision® Doors

#### LED Lighting

ChillBrite® 4000K LED Lighting

#### Additional Models

The Highlight® Hybrid™ medium temp lineup offers standard, and tall cases. The standard cases are available with 24" or 30" wide doors.

### Applications



Beverage



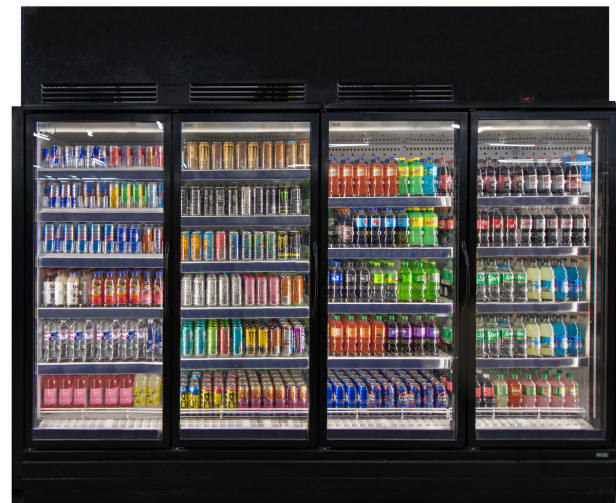
Dairy



Deli



Produce



Manuals and Instructions:  
<https://www.zero-zone.com/rhmc-rhlc>



#### Contact Us:

800-247-4496

[www.zero-zone.com](http://www.zero-zone.com)

Specifications are subject to change without notice. All dimensions are nominal.  
Case designed to operate in an ambient temperature of 75°F and relative humidity of 55% or lower.



SS-89 Rev E • 9/26/2024

© 2024 Zero Zone, Inc.

Page 1 of 3





## Standard Package

Refrigeration Data	R-404A Refrigerant		R-448A Refrigerant	
	4-Door	6-Door	4-Door	6-Door
Refrigerant Charge (lbs.) <sup>1</sup>	4.0	5.6	4.0	5.6
Zero Zone Condensing Unit #	69-10221	69-10324	69-10222	69-10235
Condensing Unit Crated Weight (lbs.)	70	70	70	70
Electrical & Energy Data <sup>2, 3, 4</sup>	With Condensate Removal System		With Condensate Removal System	
MOCP (amps) <sup>5</sup>	15	15	15	15
MCA (amps) <sup>6</sup>	8.6	14.8	8.6	14.8
Daily Energy Use (kWh)	11.8	15.1	11.0	14.2
Rejected Heat (Btu/h) <sup>7</sup>	1,680	2,148	1,567	2,018
Electrical & Energy Data <sup>2, 3, 4</sup>	Without Condensate Removal System		Without Condensate Removal System	
MOCP (amps) <sup>5</sup>	15	15	15	15
MCA (amps) <sup>6</sup>	7.7	8.8	7.7	8.8
Daily Energy Use (kWh)	11.4	14.5	10.6	13.6
Rejected Heat (Btu/h) <sup>7</sup>	1,623	2,062	1,510	1,933

## Physical Data

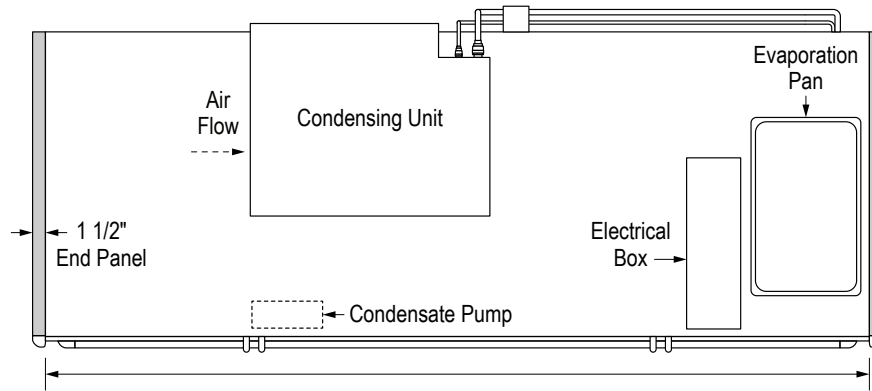
Case Calculations	4-Door	6-Door
Facings (ft. <sup>2</sup> )	43.1	64.5
Packout (ft. <sup>3</sup> ) 24" Shelves	85.0	127.2
Weight (lbs.) <sup>8</sup>	975	1,550

**Notes:**

1. Refrigerant charge includes combined condensing unit and case charges.
2. Data based on Zero Zone ChillBrite® 5 LED lighting, Zero Zone CoolView® Ultra™ French-swing doors, and SSC electronic fan motors. See separate remote case spec sheets for more details.
3. 208V (four-wire) service; 115/208V-1PH-60Hz; red and black AC Line, white AC neutral, green Safety Ground. Buck/boost transformer available for low voltage conditions.
4. Optional main service disconnect is available upon request.
5. MOCP = Maximum over-current protection.
6. MCA = Minimum current amps.
7. Adequate ventilation must be provided to dissipate rejected heat from the top of the unit for proper performance. Clearance of less than 30" above the top of the shroud to the ceiling requires special design considerations. See Zero Zone Hybrid™ Installation & Operation Manual for specific details.
8. Does not include weight of condensing unit. Weights include 2 end panels at 60 lbs. per pair.



### RHCC24 Hybrid™ Top View



Measurements	4-Door	6-Door
Case Length (in.) without End Panels	96 1/4	143 7/8
Case Length (in.) with End Panels	99 1/4	146 7/8

### RHCC24 Hybrid™ Top View

